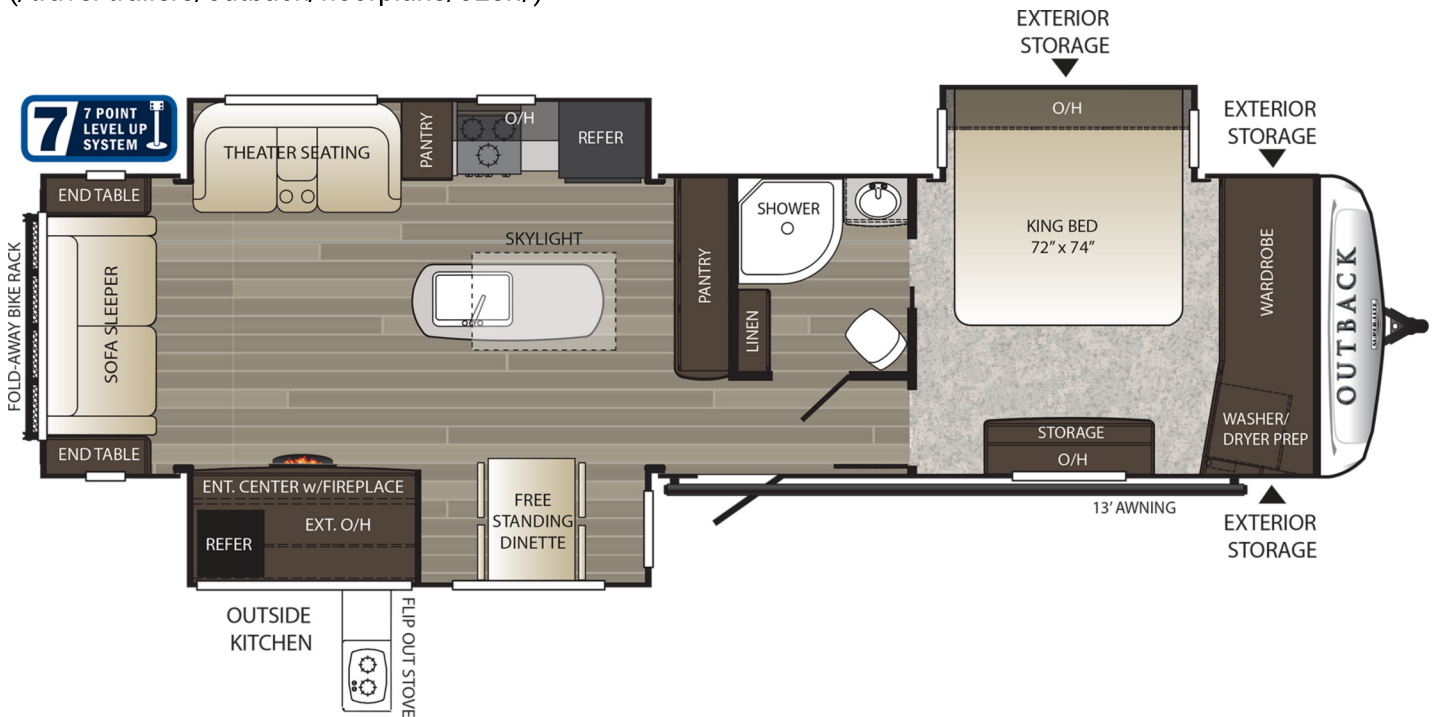


# Outback - Outback 330RL



(/travel-trailers/outback/floorplans/328rl/)



## KEY SPECIFICATIONS - 330RL

Shipping Weight	8803 lbs.
Carrying Capacity	1697 lbs.
Hitch	1100 lbs.
Length	37,10
Height	11,4
Fresh Water	60 gal
Waste Water	38 gal
Gray Water	76 gal

## LIVING AREA

- Upgraded furniture package
- Hand glazed mystic maple cabinetry
- Lounge dinette
- 36" flush floor slides
- Large panoramic windows
- Pre-drilled and screwed cabinetry
- Custom designed box valance with soft curtains
- Linoleum flooring
- Large wood side drawers with steel guides
- Water soil, stain resistant fabrics
- Large overhead cabinets
- HDTV
- MCD roller shades\*
- Vaulted ceiling

LPG	60
Tire-Size	ST225/75R15E
Sleeping Capacity	6
Region	All
Stock Only	No
Most Popular	No
New	No
Bunkhouse	No
Garage	No
Interior Kitchen	Island Kitchen
Outdoor Kitchen	Yes
Front Living Area	No
RV Type	Travel Trailers
Brands	Outback

- Floor lights (2)
- USB charging port
- LED lighting
- Batten ceiling accent
- Hide-a-bed sofa-sleeper

## KITCHEN

- Single basin sink with 3" drains
- Trash can storage\*
- Two door 8 cu. ft. refrigerator
- High-rise faucet w/pullout sprayer\*
- Utensil tray
- 3 burner range with oven\*
- Microwave
- Upgraded laminate countertops
- Stainless steel appliances
- Skylights over islands

## BEDROOM

- Deluxe innerspring mattress
- TV hook-up
- Jalousie windows for maximum ventilation
- Residential bedspread
- Deluxe headboard
- His and her lights
- Bedroom speakers
- 2 Full length wardrobes
- Recessed cubby storage w/110 volt outlets (most models)
- USB charging port
- Washer/dryer prep (326RL, 328RL, 330RL)

## BATHROOM

- Power roof vent
- Skylight over tub
- Porcelain foot flush toilet
- Tub surround\*
- Radius shower (N/A 266RB, 312BH)
- Deluxe medicine cabinet
- Large linen closet (most models)

## APPLIANCES

- Stainless steel
- DVD player with bluetooth remote control app
- Two door 8 cu. ft. refrigerator
- 3 burner range with oven\*

- Six gallon gas/electric DSI water heater by pass with 16.2 gallons per hour quick recovery\*
- 13,500 BTU AC wall thermostat
- 30,000 BTU furnace
- Microwave

## EXTERIOR STANDARDS

- Painted fiberglass front cap w/LED strip lights and rock guard
- Black framed tinted jalousie safety glass windows
- Black tank flush
- Assist entry grab handle
- Extended drip caps and full length drip rail
- Security light (off door side)\*
- Porch light
- Hitch light
- Step light
- Weather encapsulated body trim
- Exterior 120V receptacle
- Heated enclosed underbelly
- LP tank cover
- Automotive style fender skirts
- Double welded dual battery brackets
- Exterior speakers
- Easy lube axles
- Outside camp kitchen (most models)\*
- Exterior quick connect LP hook-up
- LED Hitch lights
- Satellite prep
- Slam latch baggage doors w/magnetic door holders
- Rear ladder (N/A 335CG)
- Power tongue jack
- Black slide out endwalls
- Water docking station
- Power stabilizer jacks
- Aluminum entry steps
- Friction hinge entry door
- Rear max cargo rack
- 7.3 auto leveling system
- Battery disconnect

## WALLS

- Welded aluminum walls with R7 insulation
- Solid block foam insulation

## ROOF

- 5" Radius, vaulted galvanized steel, tapered trusses on 16" centers
- 3/8" roof decking
- One-piece TPO roof
- R14 blanket insulation

## **FLOOR**

- 2" welded aluminum laminated floor
- R10 block foam insulation
- Wrapped vapor barrier
- Polypropylene enclosed heated underbelly encloses tanks and valves

## **CHASSIS**

- Leaf spring equalizing suspension system
- Powder coated I-beam
- 10" electric brakes
- 15" radial tires\*
- 15" spare tire, carrier & cover\*
- Aluminum rims\*

## **UTILITIES**

- 75-amp converter
- 30 lbs. LP bottles with auto changeover
- Omni directional hands-free TV/radio antenna
- 50-amp shore power line
- LP leak detector
- Smoke detector
- Carbon monoxide detector\*
- Fire extinguisher
- Tinted safety glass windows
- Break-away switch
- Safety chains
- Manual slide backup on all electric slide outs
- 12 Volt battery disconnect
- Carbon monoxide detector
- RVIA
- Radial Tires
- 15" spare tire, carrier, and cover
- Aluminum rims

## **OUTBACK DESIGNER**

### **PACKAGE\***

- Coat hooks (most models)
- Utensil rack

- Innerspring mattress
- Bedspread
- LP cover
- MCD roller shades
- Decorative wall lights
- Trash can

## **OUTBACK COMFORT PACKAGE\***

- 13,500 BTU ducted air conditioner
- TV antenna/cable
- AM/FM/CD stereo with bluetooth
- Microwave
- Entry assist handle

## **PREMIUM PACKAGE\***

- Polar White medallion high gloss exterior fiberglass
- Frameless windows
- Theater seating (298RE, 325BH, 326RL, 328RL, 330RL, 332FK, 333FE)
- Solid surface countertops w/pullout faucet
- Rear max cargo rack

## **OPTIONS**

- Free-standing dinette (Mandatory on 330RL)
- Second air conditioner
- Outback Designer Package\*
- Outback Comfort Package\*
- Premium Package\*